

# Ultra Industrial Ltd

Industrial Controls Division

1554 Streetsville Court , Mississauga, ON L5Y 4J6

Phone: 905-443-8700

Fax: 905-443-8763

Date: 08-Sep-06	<b>Quote Cover</b>	Pages: 1 of 5
<b>To: Bob Stewart</b> OMDEL Manufacturing P.O Box 5000 Markham, ON L2H 8J4 <b>Phone:</b> 905-847-6767 <b>Fax:</b> 905-847-6755	<b>From: Bill Moore</b> <i>Central Region</i> <i>Sales Manager</i>  <b>Phone:</b> 905-443-8700 <b>Fax:</b> 905-443-8766	

## Re: Fluid Control Automation System

Here is the quote you requested this morning. As per your request, I've divided the quote into sections with each item priced separately and subtotals shown for each section. Thank you for the opportunity to bid on this project and I will call you in a couple of days, once you have had a chance to review this quote

Sincerely  
Bill Moore

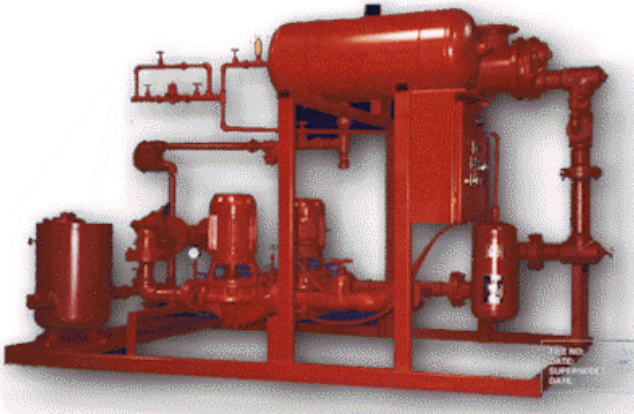
### CONFIDENTIALITY NOTICE

The information contained in this facsimile message is privileged and confidential information intended solely for the use of the individual or entity to whom it is address. If you receive this communication in error, please immediately notify us by telephone and return the original message and documents to us at the above address. Thank you

<p><b>To:</b> OMDEL Manufacturing P.O Box 5000 Markham, ON L2H 8J4</p> <p><b>Attn: Bob Stewart</b></p>	<p><b>Date:</b> September 8, 2006</p> <p><b>Sales Rep:</b> W.J. Moore</p> <p><b>Project:</b> East Plant Expansion</p> <p><b>Expiry Date:</b> October 15, 2006</p>
--	---

Item	Qty	P/N	Description	Extended Price
------	-----	-----	-------------	----------------

**Standard Heat Transfer System**



Furbished and install a duplex pump Heat Transfer package which shall have the heating capacity as specified and indicated on the drawings. The package shall be factory assembled including heat exchanger, air separator with strainer, expansion tank, pumps, motors, combination check valve, relief valve, reducing valve, temperature and pressure gauges, motor starters, condensation trap assembly with strainer, frame and interconnecting piping. Entire package, shall be factory painted. The heat exchanger, pumps, air separators and combination check valves shall be manufactured by the package system assembler. Unit shall have a performance guarantee when installed and operated in accordance with manufactures instructions.

- |     |   |           |   |            |
|-----|---|-----------|---|------------|
| 1.1 | 1 | HE005-DY  | <p><b><u>Heat Exchanger</u></b></p> <p>The heat exchanger shall be of the shell and tube steam in shell water in tubes, with U-Bend removable bundle. The shell, tube sheet and tube supports shall be steel, the head shall be cast iron and the tubes shall be 3/4 OD copper. Unit to be constructed for 125psi design pressure, 375 deg. F maximum operating temperature. Unit to be constructed in accordance with ASME code.</p>     | \$4,300.00 |
| 1.2 | 2 | AR2300-01 | <p><b><u>Air Separation:</u></b></p> <p>Air separator shall be tangential style with integral removable strainer. Unit to be constructed in accordance with ASME code. Diaphragm style expansion tank, size as indicated on the drawings. The tank shall be equipped with heavy duty elastomer diaphragm steel shell and air charging valve. The piping to the tank shall include an automatic air vent for positive air elimination.</p> | \$2,200.00 |

Item	Qty	P/N	Description	Extended Price
1.3	1	PP005-HE	<b>Piping, Frame and Test:</b> All interconnecting piping shall be schedule 40 black steel pipe. Suitable flanged connections shall be Provided in the piping to allow removal of the heat exchanger or other major components. The suction pipe on each pump shall be equipped with a bronze body gate style shutoff valve. All required tubing on the package shall be copper. Frame shall be constructed of heavy duty welded structural steel tubing. The completed package shall receive a hydrostatic test prior to shipment.	\$2,800.00

Section Total: \$9,300.00

### **Pumps & Valves**

2.1	1	CEN0930	<b>Centrifugal Pumps</b> The centrifugal pumps shall be sized as indicated on the drawings. Pumps shall be split coupled Vertical inline. The pumps shall be radically spilt single stage with cast iron casing, bronze dynamic balance impeller, stainless steel shaft, inside mechanical seal with carbon rotating face, ni-resist stationary and EPDM secondary seal. The pump shall be fitted with an external seal flush line and carbon throttle bushing. The pump shaft shall be connected to industry standards. The coupling shall permit servicing without disturbing pump , motor or electrical wiring. The coupling shall be protected by a guard.	\$ 900.00
2.2	3	CK-0056xl	<b>Combination Check Valves:</b> The discharge of each pump will be fitted with a combination calibrated balancing/non-slam /shutoff valve, type FTV. Valve shall be globe style angle design with ductile iron body, bronze disc, and high impact Engineered resin seat to ensure tight shutoff. Valve shall be equipped with two brass pressure and temperature metering ports, one located on either side of the valve seat.	\$1,620.00
2.3	2	AS-201-RV	<b>ASME Relief Valve:</b> ASME Relief Valve: ASME stamped diaphragm operated relief valve with minimum rating of full load MBH.	\$ 840.00
2.4	1	MDL-RD-40	<b>Reducing Valve:</b> Diaphragm operated pressure reducing valve with anti-siphon check valve and inlet strainer, model RD-40.	\$ 360.00

Section Total: \$3,720.00

Item	Qty	P/N	Description	Extended Price
------	-----	-----	-------------	----------------

### Electrical Controls & Gauges

3.1	1	EL-204-01	<p><b><u>Gauges and Ports:</u></b></p> <p>Each pump shall be equipped with a 2.5" pressure gauge and three way brass valving with copper tubing for measuring either suction or discharge pressure. Outlet side of heat exchanger shall be provided with a dial gauge type thermometer. Outlet side of heat exchanger shall be provided with a 1" NPT plugged port for field installation of the steam control valve sensing bulb and well.</p>	\$1,525.00
3.2	1	EL-210-11	<p><b><u>Electrical Controls:</u></b></p> <p>A single enclosure NEMA 2 control panel wired to the motors shall be provided. Panel shall have disconnect interlocked with the door, locking door handle provided with two keys, fuses for each motor and starters with 3-leg overload protection. Control circuit shall include control transformer with 120 volt secondary, fused primary and secondary, H-O-A switch for each pump, run lamp for each pump and terminal strip connections for remote operation of each pump. Panel shall be constructed in Accordance with UL508.</p>	\$2,750.00
3.3	1	MON0-01	<p><b><u>Monitoring Unattended</u></b></p> <p>Monitoring communications system running under windows equipped with AT-GPIB board and modified modem. The system records and processes data, checks temperatures and facility safety.</p>	\$1,220.00

---

Section Total: \$5,495.00

<b>Project Total : \$18,515.00</b>
------------------------------------

# TERMS & CONDITIONS OF SALE

## SHIPMENT AND PASSAGE OF TITLE

Shipment will be made F.O.B. ULTRA INDUSTRIAL LTD. plants unless another shipping point is designated on the face hereof, in which event shipment will be F.O.B. such shipping point. In the absence of specific shipping instructions, method of shipment will be determined by ULTRA INDUSTRIAL LTD. Unless directed otherwise by the Purchaser, full invoice value will be declared for deliveries by railway and air express and air freight. No insurance will be provided or taken out for Purchaser on rail or motor freight shipments unless specifically requested by Purchaser. In all cases, ULTRA INDUSTRIAL LTD.'s responsibility (except as stated in our warranty) ceases, and, except in the case of conditional or C.O.D. sales, (when title passes on full payment), title shall pass upon delivery of the material to the carrier, irrespective of method of shipment and method of payment for shipment. All arrangements with carriers for freight rates are for the account of ULTRA INDUSTRIAL LTD.

## DELIVERY

ULTRA INDUSTRIAL LTD. will endeavor to meet delivery schedules but in no case shall ULTRA INDUSTRIAL LTD. incur any liability, consequential or otherwise, for any delays or failure to deliver as a result of ceasing to manufacture any product or for any cause beyond its reasonable control, including, without limiting the generality of the foregoing, fire, windstorm, riot, war, embargo, strikes, explosion, release of radio activity, accident, flood, drought, earthquake, sabotage, disputes with workmen, transportation conditions, inability to secure adequate material or labor, activities of the Armed Forces, acts of God or the public enemy, Governmental action of any kind, or any cause similar or dissimilar to any of the foregoing. Delivery quotations are our best estimate on the basis of current schedules. We reserve the right to allocate our inventories and current production, when we believe the Government regulations or other causes, whether similar or dissimilar, may make this action necessary. In no event shall ULTRA INDUSTRIAL LTD. be liable for special or consequential damages resulting from failure to meet requested delivery schedules.

## PRICES AND TERMS OF PAYMENT; TAXES.

All prices are subject to change without notice prior to acceptance of order by the Home Office, and thereafter to the extent provided herein. Offers to sell are subject to change without notice unless stated to be firm for a definite period, and in all cases are subject to withdrawal at any time before acceptance by Purchaser. Prices on accepted orders are firm only for shipments ULTRA INDUSTRIAL LTD. agrees to make within six months in the case of equipment, or within sixty days in the case of purchased parts, from the date of order acceptance by ULTRA INDUSTRIAL LTD. Unless otherwise specified, shipments of equipment made more than six months, and of purchased parts more than sixty days, from date of order acceptance will be invoiced at ULTRA INDUSTRIAL LTD.'s prices currently in effect at the time of shipment."

## TERMS OF PAYMENT"

On approved credit accounts, all invoices are due and payable in full, thirty days after date of invoice, unless other terms are specified by ULTRA INDUSTRIAL LTD. Any and all moneys owing ULTRA INDUSTRIAL LTD. are due and payable. In all cases, if shipment is delayed by Purchaser, payment shall become due at ULTRA INDUSTRIAL LTD.'s sole option, thirty days after the former of (1) the date on which ULTRA INDUSTRIAL LTD. is prepared to make shipment, or (2) the originally scheduled shipment date. If, in ULTRA INDUSTRIAL LTD.'s judgment, the financial condition of Purchaser does not justify continuation of production of shipment, on the terms of payment specified, ULTRA INDUSTRIAL LTD. may cancel any unfilled order or part thereof unless Purchaser shall, upon notice, immediately pay for all merchandise delivered or shall pay in advance for all merchandise not delivered, or both, at ULTRA INDUSTRIAL LTD.'s sole option.

## 6. CANCELLATION AND RETURNS

These terms and conditions or anything on the face hereof cannot be modified or canceled by Purchaser except in writing and with the written consent of authorized ULTRA INDUSTRIAL LTD. Home Office representative. Assent to requests for cancellation of specially built apparatus normally will not be given. Prices for specially built apparatus are based upon one continuous production run, for which all material necessary to complete Purchaser's order is acquired by ULTRA INDUSTRIAL LTD. in advance. Returns will be accepted only when approved in advance in writing by an authorized ULTRA INDUSTRIAL LTD.

## 7. WARRANTY

ULTRA INDUSTRIAL LTD. warrants all equipment of its own manufacture to be free of defects caused by faulty material or defective workmanship and will, at its option, exchange or repair free of charge, F.O.B. its factory, such part of parts thereof that prove defective under normal use within thirty (30) months from date of shipment, or twenty-four (24) months from date of installation, whichever is shorter. The seller's obligation under this warranty is limited to the above and does not apply to replacement or repairs which are required as the result of improper installation, misuse, maladjustment, abnormal operating conditions, or lack of routine maintenance. Nor does the warranty include the furnishing of service for maintenance or problems arising from the foregoing causes. No claims for labor or other expenses will be recognized. This warranty is in lieu of and to the exclusion of all other warranties, expressed or implied.

The seller shall not be liable for any claims, losses, labor expenses or damages, direct or consequential, resulting directly or indirectly from the use of, or inability to use, its products or for other consequential loss or damage of any nature arising from any cause. The range over which any control system can effect regulation and the degree of accuracy obtainable can be no better than the range and accuracy permitted by the auxiliary equipment being controlled. No responsibility is assumed in respect of control equipment where auxiliary equipment does not respond in the manner required to achieve desired results.

1554 Streetsville Court , Mississauga, ON L5Y 4J6    Phone: 905-443-8700    Fax: 905-443-8763

**To: Scott Controls**  
 1200 Northgate Blvd  
 Toronto, ON M2H 8J4

**Date:** September 8, 2006  
**Sales Rep:** W.J. Moore  
**Project:** Fluid Components  
**Expiry Date:** October 15, 2006

**Attn: Walter Jones**

Item	Qty	P/N	Description	Unit Price	Extended Price
------	-----	-----	-------------	------------	----------------

**Control Automation Components**

1.1	1	20005-00	1in. 3-way full port motorized ball valve with actuator. Temp.rating 350 - 125 deg. F. and psi 200 - 800 psi	\$440.00	\$440.00
1.2	4	2300-01	520-2-7R-18-HT Replacement pH sensor, temperature compensated.	\$235.00	\$940.00
1.3	1	MDL-01	NEMA 4X watertight enclosure. No outlets or power cord. For extreme environments including blowing rain.	\$1,023.00	\$1,023.00
1.4	2	4500-09	Conductivity controller, steel enclosure with flow switch, flow sight, power cord and outlets. 5-10 pH & 0-5,000 micromhos standard scale. Digital display.	\$1,450.00	\$2,900.00

Section Total: \$5,303.00

**Options & Accessories**

2.1	1	20005-00	Dual timer controller	\$640.00	\$640.00
2.2	2	4500-09	RFP-07 LMI Water meter pulsed system	\$1,090.00	\$2,180.00
2.3	2	4500-09	TRANSFER HOSE ASSEMBLIES -	\$ 450.00	\$ 900.00

Section Total: \$3,720.00

**Project Total :    \$ 9,023.00**

**Terms**

- Pricing for quantities shown
- Taxes extra
- Net 30 Days
- Quote good for 30 days

*Authorization*

## Profit Summary

Quotation: **Q00036.00**

<b>Quote #</b>	<b>Description</b>	<b>Sales Rep</b>	<b>Created</b>	<b>Modified</b>	<b>Required</b>	<b>Award Date</b>	<b>Expiry Date</b>
<b>Q00036.00</b>	Project Budget Quote	Carol Smith	03-Sep-06	28-Jan-07	12-Dec-06	01-Mar-07	31-Dec-06
<b>Customer</b>	<b>Contact</b>	<b>Phone/FAX</b>	<b>Status</b>	<b>As Of:</b>	<b>Note</b>		
<b>Halton Fluid Controls</b> 234 Blue Jay Way,,Toronto,ON	G.K. Roberts	(905) 445-2323 (905) 445-2623	Active	03-Dec-97	Quote Created		

Item	Part #	Qty	Description	Cost/Unit	Extended Cost	Price/Unit	Discount %	Discount	Margin	Net Price/Unit	Extended Net
<b>Fluid Components</b>											
1	D-MF260C	1	Pump assembly kit with all fittings and connectors	\$132.00	\$132.00	\$202.95	0.0%	\$0.00	35.0%	\$202.95	\$202.95
2	D-MF290C	4	High capacity 100 psi pump with mounting bracket.	\$659.99	\$2,639.96	\$1,014.74	6.0%	\$60.88	30.8%	\$953.85	\$3,815.40
3	-CR1aa	1	0-10 range front panel for 224 only, range is 0-100 micro Siemens	\$659.99	\$659.99	\$1,014.74	0.0%	\$0.00	35.0%	\$1,014.74	\$1,014.74
4	A-1	1	Standard agitator, iron clamp, steel coupling, S.S. shaft & prop	\$1,240.30	\$1,240.30	\$1,906.96	0.0%	\$0.00	35.0%	\$1,906.96	\$1,906.96
5	FC-1A-21	2	7 day dual program timer - dual channel - NEMA 1	\$2,342.85	\$4,685.69	\$3,602.12	6.0%	\$216.13	30.8%	\$3,386.00	\$6,771.99
<b>Section Totals.</b>					<b>\$9,357.94</b>						<b>\$13,712.04</b>
<b>Options &amp; Accessories</b>											
6	R110A-117	4		\$449.61	\$1,798.44	\$691.27	13.3%	\$91.80	25.0%	\$599.48	\$2,397.92
7	DA-100	1	100 ml. assembly with 1/2 in. valves	\$424.31	\$424.31	\$652.38	13.3%	\$86.63	25.0%	\$565.75	\$565.75
8	26741	1	LMI 1in. pt bronze Corporation stop with Carpenter 20 nozzle	\$200.00	\$200.00	\$307.50	13.3%	\$40.83	25.0%	\$266.66	\$266.66
9	QC-316-75	1	Neptune 316 S.S. Chemical injection quill 3in. long, 3/4in. npt	\$153.60	\$153.60	\$236.16	13.3%	\$31.36	25.0%	\$204.80	\$204.80
<b>Section Totals.</b>					<b>\$2,576.35</b>						<b>\$3,435.13</b>
<b>Grand Totals.</b>					<b>\$11,934.29</b>						<b>\$17,147.17</b>











